

WWW.ELLA-PARIS.FR
@ELLAPARIS75



ISABELLE ANGOT
06 24 68 64 32
ISABELLE.ANGOT@ELLA-PARIS.FR



LIND

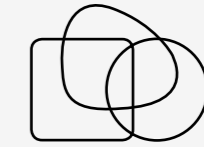




DK

MADE IN DENMARK

All LIND DNA recycled leather designs are handcrafted in Denmark, ensuring unprecedented quality in every step of the production process.



SHAPE / SIZE

With our very special inhouse production set-up, we can meet your wishes as for customization of size and shape. We can fit any setting to your tables and surroundings.



SUSTAINABLE DESIGN

Sustainability is at the heart of the LIND DNA strategy. Our recycled leather is made from 80% recycled leather and 20% natural rubber.



FLEXIBILITY & SPEED DELIVERY

Due to local production, delivery time is short for both customized and standard orders, which ensures the highest degree of flexibility.



CUSTOMIZATION

Our inhouse design and graphic team combined with our extensive range of colours provide great flexibility in supporting special customization ideas from our customers.



EASY TO CLEAN

The unique combination of recycled leather and natural rubber gives a strong and durable material, which is very easy to maintain, and which will keep its look and feel through continued use.



RECYCLED LEATHER

The bedrock of most of our designs is OEKO-TEX® certified, recycled leather. Sourced from surplus production from the furniture and fashion industry, the vegetable-tanned core leather is first granulated, and then pressed together with natural rubber from trees. The result is a recycled leather quality, consisting of 80% core leather and 20% natural rubber – a material that is not only incredibly durable and water repellent but also easy to clean. Lastly, the recycled leather is dyed with water-based colour and embossed with beautiful surface textures and patterns.



COLLECTION OF COLOURS AND TEXTURES OF RECYCLED LEATHER



SERENE - THE AUTHENTIC

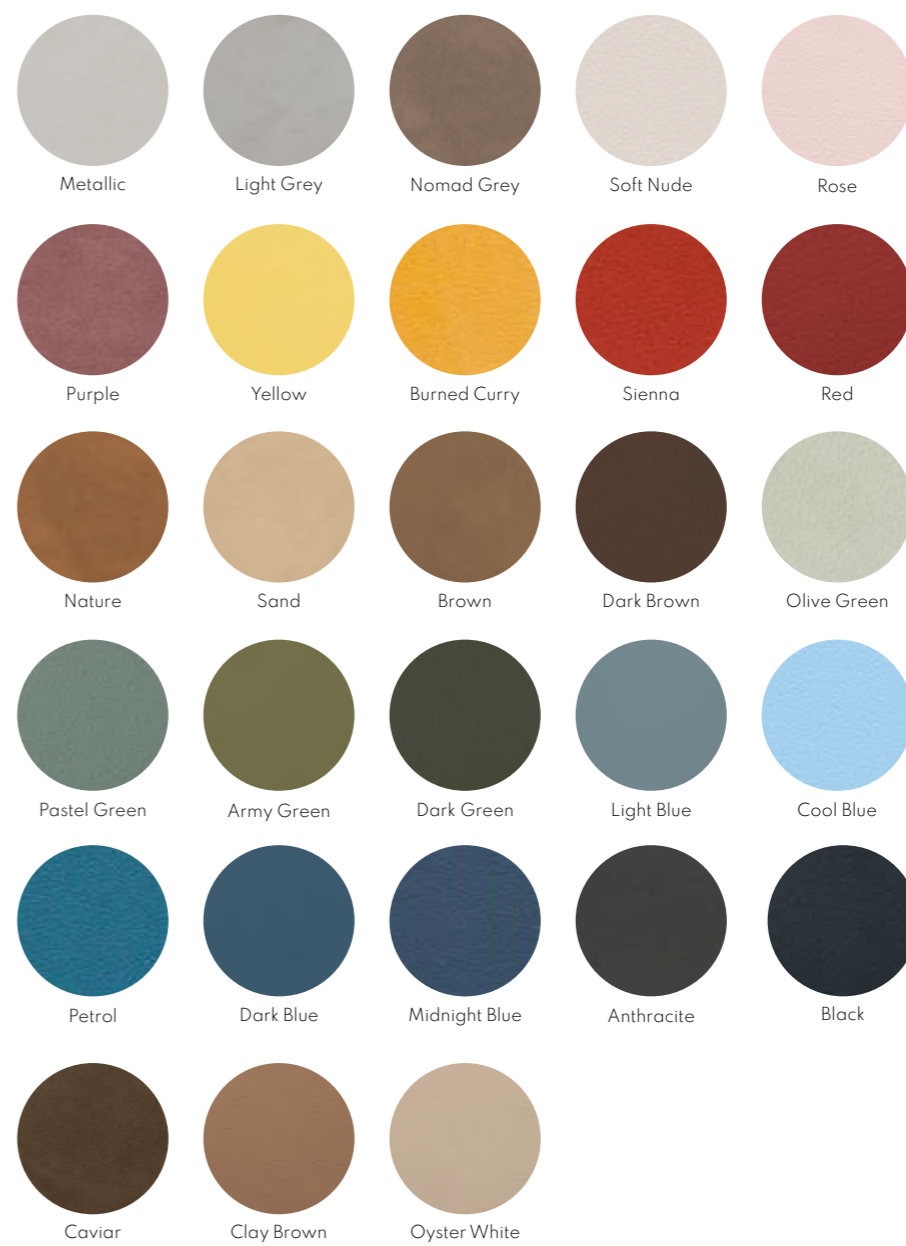
Leather SERENE is a very durable type of leather and differs from other LIND DNA qualities by being softer and more flexible, without compromising on strength and durability. The combination of these qualities makes SERENE stand out as our most authentic, high quality, leather type, which is very easy to clean due to a durable sealing coating. The material is 1,2 mm thick and consists of 80% core leather and 20% natural rubber.





NUPO - THE SOFT

NUPO is one of our most popular structures. It has an exclusive, suede-like surface, with a soft structure. NUPO is elegant and timeless - the perfect choice for almost any interior style. The material is 1,6 mm thick and consists of 80% core leather and 20% natural rubber.





HIPPO - THE 2-TONED

HIPPO is developed with inspiration from the world of animals and its characteristic structure with different depths creates a beautiful play between bright and darker shades across the surface. The material is

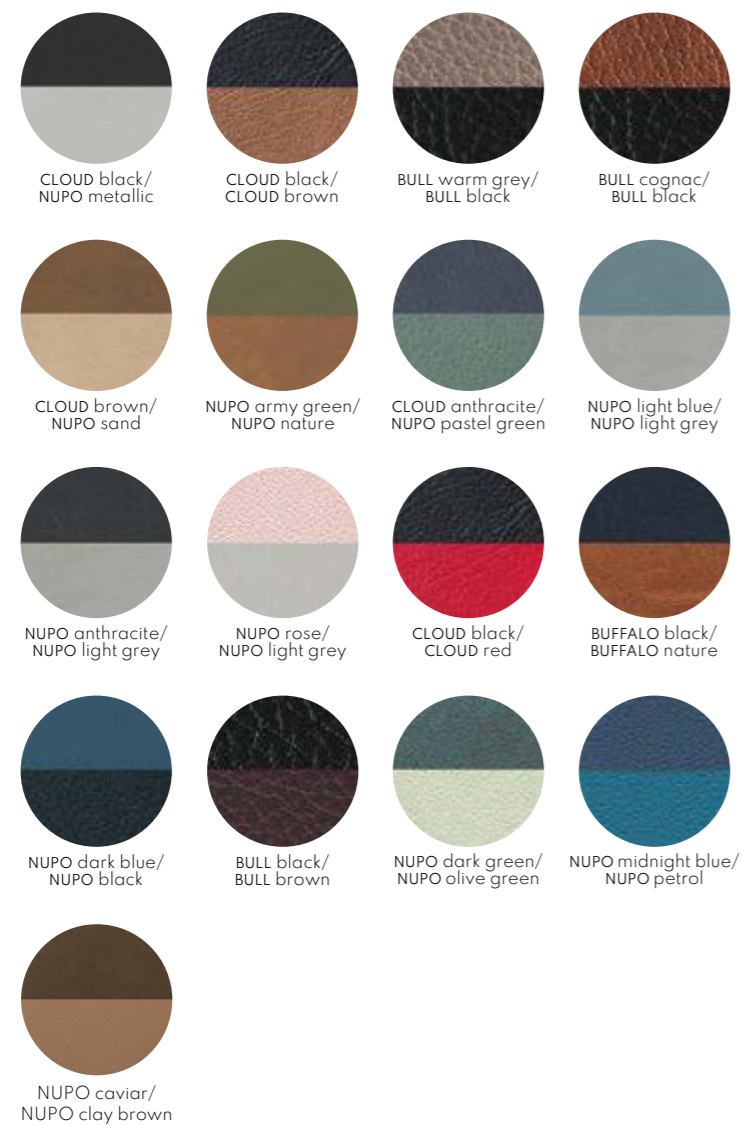
1,6 mm thick and consists of 80% core leather and 20% natural rubber.



REVERSIBLE - 2 IN 1

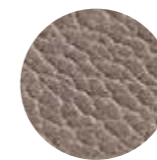
With a unique technique, we have created a two-in-one Reversible leather type with carefully combined colours and textures. The combinations are fixed and are perfect for table mats and glass mats in any shape and size, as well as for inlays, and menus.

Available in all standard shapes and sizes.
Mat thickness 2mm.



BULL - THE STRONGEST

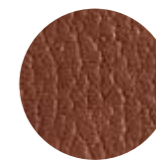
BULL is one of LIND DNA's strongest structures. The slightly thicker structure makes the material incredibly durable and easy to maintain. With a small, fibrous pattern, the surface has a classic leathery look. BULL is soft, durable and conveys a slightly polished look. The material is 2 mm thick and consists of 80% core leather and 20% natural rubber.



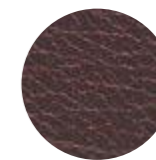
Warm Grey



Nature



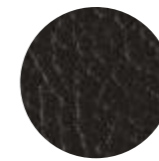
Cognac



Brown



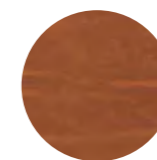
Red



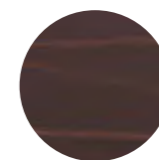
Black

BUFFALO - THE RUSTIC

With its large and natural looking pattern, BUFFALO is an unspoiled surface, that brings a perfect foundation of rustic style to your table. Alternatively, it can beautifully balance out a more sophisticated table setting in a grounded and understated way. The material is 2 mm thick and consists of 80% core leather and 20% natural rubber.



Nature



Brown



Black

LACE - THE EXTRAVAGANT

LACE is a half-glossy, half-matte, extravagant surface inspired by premium lace fabrics – the recognizable and playful structure will make a beautiful statement in any table setting. The material is 1,6 mm thick and consists of 80% core leather and 20% natural rubber.



Black



Brown



CUSTOMIZATION AND DESIGN

Lind DNA offers a very large and versatile collection of products for the hospitality and project market – beautiful and functional at the same time. In addition to our standard collection, we offer many solutions within customization.

We have an in-house design & graphic department to support customers with special ideas and wishes. The fact that most of our collection is produced at our own production facilities in Aarhus, Denmark, secures a high level of quality and flexibility. Whichever product

you are looking for, we are here to support and inspire you.

We offer various solutions within customization, which make the final products exclusive and unique, such as:

- Special sizes of Mats, Coasters, and Inlays for trays.
- Customized colors in recycled leather (min. qty = 1000 large Table Mats)



- Company logo embossment on all leather products such as Table mats, Coasters, Menus & Payment holders, Inlays, etc.. Either as blind embossment or with foil, such as gold, silver, grey, black, etc.
- Menu folders with embossment and/or embellishment (like stitchings), different opening & closing mechanisms
- Custom made trays.

All our surface textures and colours can be used for any shape or size of mat, and we can therefore customize a solution to suit any desired style

YOU NAME IT, WE MAKE IT.

Our goal is to help you make a statement in any kind of setting and to create truly unique and memorable experiences for your guests.

CLEANING PRODUCTS

Care is key to keeping your LIND DNA leather products in tip top shape, which is why we have developed two unique cleaning products: DEEP CLEANING SOAP and CLEAN&CARE.



DEEP CLEANING SOAP

For a thorough in-depth cleaning of Lind DNA Table Mats and Glass Mats, we have developed our DEEP CLEANING SOAP, which is a liquid soap, especially made for cleaning of products in recycled leather. Simply dilute the soap into a bit of water and wipe the mats over gently with a sponge, allowing the soap to foam up. Afterwards remove the foam with a damp cloth. For heavy cleaning, leave the foam on the product for a few minutes, and remove with a damp cloth. The DEEP CLEANING SOAP ensures that the mats stay perfect year after year.



CLEAN&CARE

CLEAN&CARE is our easy, universal cleaning spray for all leather products, LIND CURVE- and SILHOUETTE candleholders and vases. Just spray and wipe.

DEEP CLEANING SOAP	
FINISH/COLOUR	ITEM No.
Deep Cleaning Soap 480 ml	3001
COLLI	6

CLEAN&CARE	
FINISH/COLOUR	ITEM No.
CLEAN&CARE 250 ml	3000
COLLI	6

TABLEMATS

Our Table Mats are available in four standard shapes and several standard sizes. Apart from these, we do customized mats in whatever shape and size, you may require.





TABLE MATS CURVE

The Curve shape, easily recognizable as the traditional LIND DNA table mat, is available in three standard sizes: Small, Medium, and Large. Other sizes available on request.

STANDARD SIZES AVAILABLE

TABLE MAT CURVE S: W:24xL:28 cm

TABLE MAT CURVE M: W:31xL:35 cm

TABLE MAT CURVE L: W:37xL:44 cm





TABLE MATS SQUARE

The Square shaped table mat is available in three standard sizes. Special sizes are available on request.

STANDARD SIZES AVAILABLE

TABLE MAT SQUARE S: W: 28 x L: 28 cm

TABLE MAT SQUARE M: W: 26,5 x H: 34,5cm

TABLE MAT SQUARE L: W: 35 x L: 45 cm





TABLE MATS CIRCLE

The Circle shaped table mat is available in three standard sizes. Special sizes are available on request.

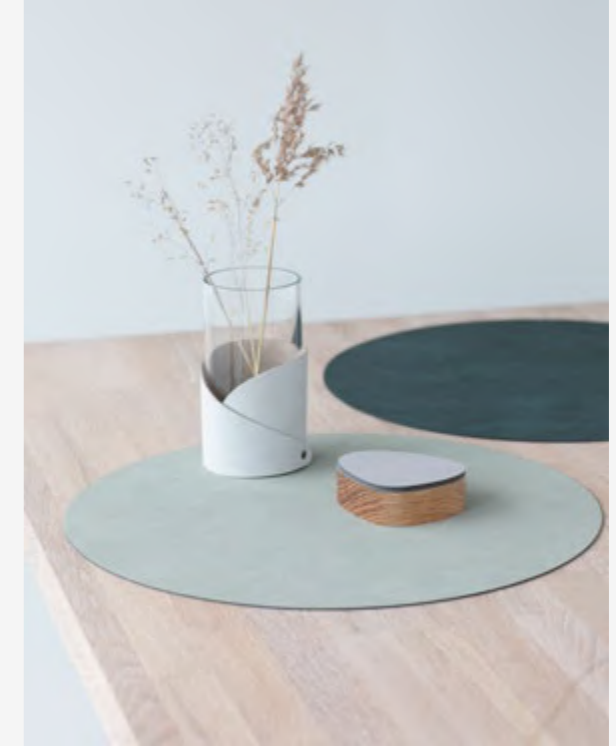


TABLE MATS OVAL

The Oval shaped table mat is available in two standard sizes. Special sizes are available on request.

STANDARD SIZES AVAILABLE

TABLE MAT OVAL S: D: 26x33cm
TABLE MAT OVAL L: D: 35x46cm



STANDARD SIZES AVAILABLE

TABLE MAT CIRCLE S: D: 24 cm
TABLE MAT CIRCLE M: D: 30 cm
TABLE MAT CIRCLE XL: D: 40 cm





REVERSIBLE MATS

With a unique technique, we have created a two-in-one Reversible leather type with carefully combined colours and textures. The combinations are fixed and are perfect for table mats and glass mats in any shape and size, as well as for inlays, and menus.

Available in all standard shapes and sizes in selected color combinations (see color guide).

Special sizes available on request.



NUPO antrachite /
NUPO light grey



NUPO army green /
NUPO nature



NUPO light blue /
NUPO light grey



NUPO midnight blue /
NUPO petrol

GLASS MATS



Our GLASS MATS are available in four standard shapes and in all our different leather types. Special sizes are available on request.



STANDARD SIZES AVAILABLE

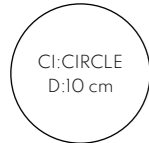
GLASS MAT CURVE: W: 11 x L: 13 cm

GLASS MAT SQUARE: W: 10 x L: 10 cm

GLASS MAT CIRCLE: D: 10 cm

Special sizes available on request

GLASS MATS



GLASS MAT

QUALITY:
 BULL: 2,0 mm
 BUFFALO: 2,0 mm
 LACE: 1,6 mm
 DOUBLE: 2,0 mm
 HIPPO: 1,6 mm
 NUPO: 1,6 mm
 SERENE: 1,2 mm

BULL black CU: 9850 SQ: 98354 CI: 98316	BULL brown CU: 9853 SQ: 98357 CI: 98319	BULL cognac CU: 990251 SQ: 990252 CI: 990253	BULL nature CU: 9852 SQ: 98356 CI: 98318	BULL red CU: 9855 SQ: 98359 CI: 98331	BULL warm grey CU: 990263 SQ: 990264 CI: 990265	BUFFALO black CU: 98884 SQ: 98887 CI: 98881	BUFFALO brown CU: 98885 SQ: 98888 CI: 98882		
BUFFALO nature CU: 98886 SQ: 98889 CI: 98883	LACE black CU: 9894 SQ: 98111 CI: 98152	LACE brown CU: 98901 SQ: 98902 CI: 98900	CLOUD/NUPO anthracite/pastel green CU: 981811 SQ: 981808 CI: 981805	CLOUD/CLOUD black/brown CU: 983501 SQ: 983511 CI: 983491	CLOUD/NUPO black/metallic CU: 981812 SQ: 981809 CI: 981806	CLOUD/CLOUD black/red CU: 983502 SQ: 983512 CI: 983492	CLOUD/NUPO brown/sand CU: 981813 SQ: 981810 CI: 981807		
NUPO/NUPO anthracite/light grey CU: 982857 SQ: 982856 CI: 982855	NUPO/NUPO army green/nature CU: 982167 SQ: 982177 CI: 982172	NUPO/NUPO dark blue/black CU: 982168 SQ: 982178 CI: 982173	NUPO/NUPO light blue/light grey CU: 982169 SQ: 982179 CI: 982174	NUPO/NUPO rose/light grey CU: 9882 SQ: 9896 CI: 98117	NUPO/NUPO Dark Green/Olive green CU: 991143 SQ: 991136 CI: 991148	NUPO/NUPO Midnight Blue/Petrol CU: 991142 SQ: 991137 CI: 991149	NUPO/NUPO caviar/clay brown CU: 991785 SQ: 991788 CI: 991791		
BULL/BULL black/brown CU: 982170 SQ: 982180 CI: 982175	BULL/BULL Warm Grey/Black CU: 990287 SQ: 990288 CI: 990289	BULL/BULL Cognac/Black CU: 990275 SQ: 990276 CI: 990277	BUFFALO/BUFFALO black/nature CU: 982171 SQ: 982181 CI: 982176	HIPPO anthracite-grey CU: 98863 SQ: 98864 CI: 98862	HIPPO black-anthracite CU: 981286 SQ: 981287 CI: 981285	HIPPO curry CU: 981085 SQ: 981086 CI: 981084	HIPPO forest green CU: 990215 SQ: 990216 CI: 990217		
HIPPO gold CU: 990156 SQ: 990157 CI: 990158	HIPPO light blue CU: 981151 SQ: 981152 CI: 981150	HIPPO nature CU: 990223 SQ: 990224 CI: 990225	HIPPO navy blue CU: 981260 SQ: 981261 CI: 981259	HIPPO olive green CU: 983503 SQ: 983513 CI: 983493	HIPPO pastel green CU: 981124 SQ: 981125 CI: 981123	HIPPO sand CU: 981312 SQ: 981313 CI: 981311	HIPPO Silver CU: 990554 SQ: 990555 CI: 990556	HIPPO warm grey CU: 990227 SQ: 990228 CI: 990229	HIPPO white-grey CU: 989225 SQ: 989226 CI: 989224
NUPO anthracite CU: 981181 SQ: 981185 CI: 981189	NUPO army green CU: 982492 SQ: 982496 CI: 982500	NUPO black CU: 981797 SQ: 981801 CI: 981793	NUPO brown CU: 981184 SQ: 981188 CI: 981192	NUPO burned curry CU: 989987 SQ: 989988 CI: 989989	NUPO caviar CU: 991724 SQ: 991725 CI: 991723	NUPO clay brown CU: 991727 SQ: 991729 CI: 991726	NUPO cool Blue CU: 991145 SQ: 991139 CI: 991151	NUPO dark blue CU: 982494 SQ: 982498 CI: 982502	NUPO dark brown CU: 981072 SQ: 981073 CI: 981071
NUPO dark green CU: 981053 SQ: 981056 CI: 981050	NUPO light blue CU: 982495 SQ: 982499 CI: 982503	NUPO light grey CU: 981182 SQ: 981186 CI: 981190	NUPO metallic CU: 981798 SQ: 981802 CI: 981794	NUPO midnight blue CU: 991146 SQ: 991138 CI: 991150	NUPO nature CU: 982493 SQ: 982497 CI: 982501	NUPO nomad grey CU: 990239 SQ: 990240 CI: 990241	NUPO olive green CU: 983505 SQ: 983515 CI: 983495	NUPO oyster white CU: 991728 SQ: 991731 CI: 991730	NUPO pastel green CU: 981799 SQ: 981803 CI: 981795
NUPO Petrol CU: 991147 SQ: 991140 CI: 991152	NUPO purple CU: 983401 SQ: 983402 CI: 983400	NUPO red CU: 981800 SQ: 981804 CI: 981796	NUPO rose CU: 9881 SQ: 9895 CI: 98113	NUPO sand CU: 981183 SQ: 981187 CI: 981191	NUPO sienna CU: 989999 SQ: 990000 CI: 990001	NUPO soft nude CU: 991144 SQ: 991141 CI: 991153	NUPO yellow CU: 981027 SQ: 981028 CI: 981026	SERENE anthracite CU: 991511 SQ: 991516 CI: 991521	SERENE ash CU: 991509 SQ: 991514 CI: 991519
SERENE black CU: 991512 SQ: 991517 CI: 991522	SERENE cream CU: 991508 SQ: 991513 CI: 991518	SERENE Hazel CU: 991502 SQ: 991576 CI: 991579	SERENE mole grey CU: 991510 SQ: 991515 CI: 991520	SERENE moss CU: 991507 SQ: 991577 CI: 991580	SERENE Nature CU: 991501 SQ: 991575 CI: 991578				





TABLE MATS AND GLASS MAT MONSTERA LEAF

The MONSTERA LEAF table mat is available in two standard sizes and in all standard colours. Special sizes are available on request.



STANDARD SIZES AVAILABLE

TABLE MAT LEAF S: W: 22 x L: 26 cm

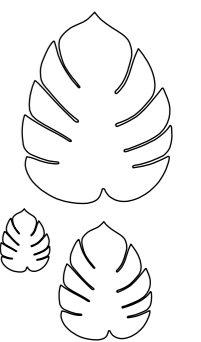
TABLE MAT LEAF L: W: 35 x L: 42 cm

GLASS MAT LEAF: W: 12 x L: 14 cm



FINISH/COLOUR	QLTY.	COLOUR	TABLE MAT LEAF S	TABLE MAT LEAF L	GLASS MAT LEAF
			W:22xL:26 cm	W:35xL:42 cm	W:12xL:14 cm
MONSTERA LEAF HIPPO forest green	1,6 mm		990219	990218	990220
MONSTERA LEAF HIPPO gold	1,6 mm		990088	990087	990089
MONSTERA LEAF HIPPO silver	1,6 mm		991537	991536	991535
MONSTERA LEAF HIPPO nature	1,6 mm		990079	990078	990080
MONSTERA LEAF HIPPO olive green	1,6 mm		989956	989950	989962
MONSTERA LEAF HIPPO pastel green	1,6 mm		989955	989949	989961
MONSTERA LEAF NUPO army green	1,6 mm		989960	989954	989966
MONSTERA LEAF NUPO black	1,6 mm		990073	990072	990074
MONSTERA LEAF NUPO burned curry	1,6 mm		990082	990081	990083
MONSTERA LEAF NUPO dark green	1,6 mm		989959	989953	989965
MONSTERA LEAF NUPO nature	1,6 mm		990076	990075	990077
MONSTERA LEAF NUPO olive green	1,6 mm		989958	989952	989964
MONSTERA LEAF NUPO pastel green	1,6 mm		989957	989951	989963
MONSTERA LEAF NUPO sienna	1,6 mm		990085	990084	990086
MONSTERA LEAF NUPO caviar	1,6 mm		991795	991797	991793
MONSTERA LEAF NUPO clay brown	1,6 mm		991796	991798	991794
COLLI			4	4	8

MONSTERA LEAF HIPPO & NUPO








 DESIGNED IN DENMARK RECYCLED LEATHER LIFETIME GUARANTEE

KIDS TABLE MAT & GLASS MAT

Practical and fun for the youngest guests – A sweet extra element to your table setting. Our Table & Glass Mats for kids come in four different designs – CLOUD, FROG, BEAR and MONKEY – and in various colours. Choose between any of our recycled leather types and colours to match the rest of the table setting.

FINISH/COLOUR	QLTY.	COLOUR	CLOUD	BEAR	FROG	MONKEY
			TABLE MAT	TABLE MAT	TABLE MAT	TABLE MAT
			W:31xL:38 cm	W:30xL:38 cm	W:28xL:38 cm	W:28xL:38 cm
NUPO anthracite	1,6 mm		983116	983126	983138	983147
NUPO army green	1,6 mm		—	—	983140	—
NUPO black	1,6 mm		983114	983124	983135	983145
NUPO dark blue	1,6 mm		983119	—	—	—
NUPO light blue	1,6 mm		983118	—	—	—
NUPO light grey	1,6 mm		983117	983127	983139	983148
NUPO metallic	1,6 mm		983115	983125	983136	983146
NUPO nature	1,6 mm		—	983128	—	983149
NUPO pastel green	1,6 mm		—	—	983137	—
NUPO purple	1,6 mm		—	983130	—	983151
NUPO rose	1,6 mm		9834	9807	—	—
COLLI			4	4	4	4

FINISH/COLOUR	QLTY.	COLOUR	CLOUD	BEAR	FROG	MONKEY
			GLASS MAT	GLASS MAT	GLASS MAT	GLASS MAT
			W:9xL:11,5 cm	W:9xL:11,5 cm	W:9xL:11,5 cm	W:8,5xL:11,5 cm
NUPO anthracite	1,6 mm		983363	983373	983385	983394
NUPO army green	1,6 mm		—	—	983387	—
NUPO black	1,6 mm		983361	983371	983382	983392
NUPO dark blue	1,6 mm		983366	—	—	—
NUPO light blue	1,6 mm		983365	—	—	—
NUPO light grey	1,6 mm		983364	983374	983386	983395
NUPO metallic	1,6 mm		983362	983372	983383	983393
NUPO pastel green	1,6 mm		—	—	983384	—
NUPO nature	1,6 mm		—	983375	—	983396
NUPO purple	1,6 mm		—	983377	—	983398
NUPO rose	1,6 mm		9830	9803	—	—
COLLI			8	8	8	8

KIDS TABLE MATS



CLOUD TABLE MAT



BEAR TABLE MAT

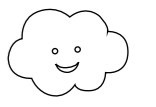


FROG TABLE MAT



MONKEY TABLE MAT

KIDS GLASS MATS



CLOUD GLASS MAT



FROG GLASS MAT



BEAR GLASS MAT



MONKEY GLASS MAT

MENU, WINE & PAYMENT HOLDERS

On the following pages we present our various collections of MENU, WINE and PAYMENT HOLDERS. All products in these collections are made from recycled leather and our wide colour palette enables you to match the collections to your complete table setting with beautiful colours and functional details that will impress your guests.

We design and produce at our own production facilities in Denmark, which secures a high level of quality and flexibility. This makes it possible for us to customize the products to your wishes and needs - and we take pride in inspiring you with new, unique designs.

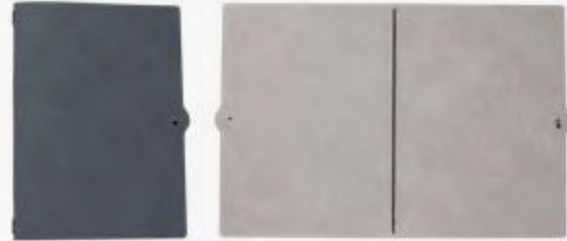


THE COLLECTION OVERVIEW

PARIS COLLECTION

PARIS comes with an elastic string inside that neatly holds several pages in place and allows for easy exchange of pages. It has got a stud closing mechanism as standard.

Page 60-61



LISBON COLLECTION

LISBON comes with a ring binder mechanism that makes it easy to quickly browse through numerous pages - perfect for a large menu or as a binder with important information in hotel rooms.

Page 62-65



BRUSSELS COLLECTION

BRUSSELS comes with a ring binder mechanism that makes it easy to quickly browse through numerous pages. It is with recycled leather outside and wool inside.

Page 90-91



COPENHAGEN COLLECTION

COPENHAGEN is a collection of menu boards with an overlay of leather and studs in the top, which makes it easy to open and close the board.

Page 70-71



NEW YORK COLLECTION

NEW YORK comes with steel rivets on the front and backside, and has got an opening and closing function in the back, allowing easy exchange of menu papers.



BARCELONA COLLECTION

BARCELONA comes with a hand-tied leather cord on the backside of the folder, which holds several menu pages securely in place.

Page 74-75



OSLO COLLECTION

OSLO comes with an elastic string inside, that neatly holds several menu pages in place, and allows for swift exchange of pages.

Page 76-79



AARHUS COLLECTION

AARHUS is a flip-over concept with a leather cord in the top, holding frontside and backside together. It holds numerous pages securely in place. The back side is made of two layers of leather.

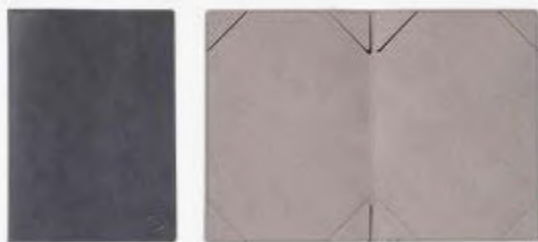
Page 86-87



AMSTERDAM COLLECTION

AMSTERDAM is hand-stitched along the edges and comes with sewn-on corners, which neatly hold menu pages in place. Pages can easily be exchanged.

Page 82-85



VIENNA COLLECTION

VIENNA is hand-stitched along the edges with a sewn-on piece of leather at the top and bottom to hold the menu in place. It is perfect for two-sided menus and pages can easily be exchanged.



LONDON COLLECTION

LONDON is a clipboard type of menu. It is available as a clipboard and as a folder with clip, allowing easy exchange of papers.

Page 66-69



ROME COLLECTION

ROME is a flip-over concept with steel rivets in the top, holding frontside and backside together. The rivets have an opening and closing function in the back. The backside of the board is made of two layers of leather.

Page 88-89





PARIS Payment
Holder



PARIS Folder
A4 and A5.

PARIS COLLECTION

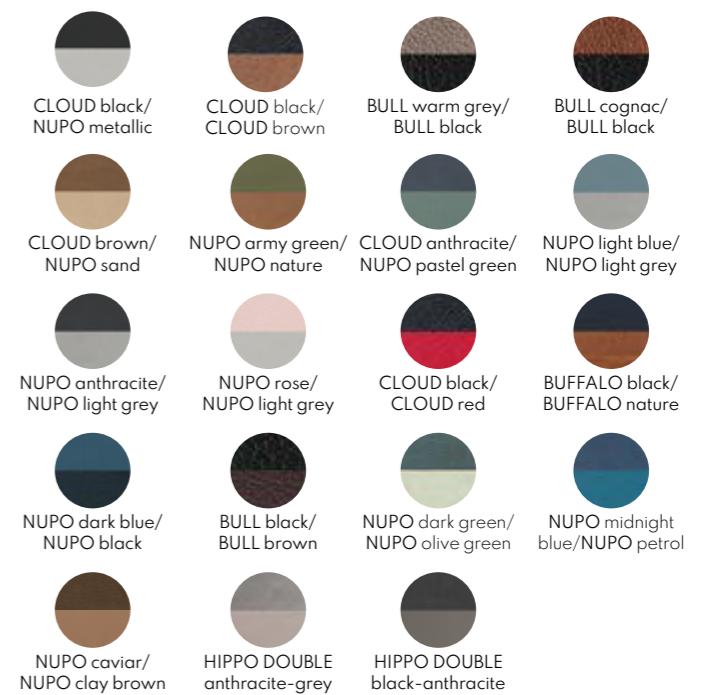
PARIS is an elegant collection of menus/wine folders with a stud closing mechanism, which is easy to open and close.

The simplistic folders, made from recycled leather, come with an elastic string inside, which neatly holds several menu pages in place and allows for easy exchange of papers.

PARIS is available in size A4, A5, and a payment card holder. The collection comes in our double sided leather, which offers you the opportunity to play with different colours on the inside and the outside of your folders.



PARIS is available in the colours below.





LISBON COLLECTION

LISBON is a minimalistic and practical, yet elegant collection of folders that can be used in various different settings.

Inspired by the functionality of a classic binder, LISBON comes with a sleek black ring mechanism that makes it easy for your customers to quickly browse through numerous pages - perfect for a large menu or as a binder with important information in hotel rooms.

As all of our menu folders, LISBON can be made with several different closing options.

LISBON is available in size A4, A5 and a A4 special edition. The collection comes in all double-sided recycled leather colours, which gives you the opportunity to play with different colours on the inside and the outside of your folder.

The LISBON SPECIAL is perfect for hotel rooms or receptions as an informative folder. We have added an extra leather "pocket" for more visible information - e.g. safety instructions. This version comes with a closure option.



LISBON Folder A5
Front



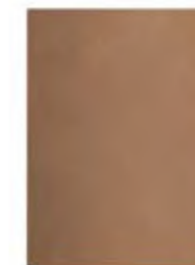
Open size A5
W: 15,9 x H: 23 cm



LISBON SPECIAL
String & button closing



LISBON SPECIAL
Open size A4



LISBON Folder A4
Front



Open size A4

CONTINUED →

LISBON COLLECTION



Open LISBON SPECIAL with leather strap closure

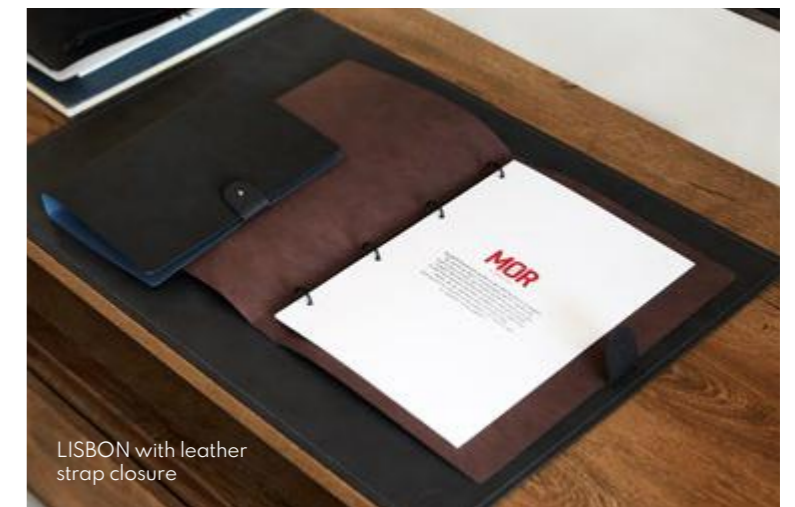


LISBON SPECIAL with leather strap closure

VARIATIONS

As all of our menu folders, LISBON can be made with several different closing options.

Sizes: A4, A3
Metal binder: black



LISBON with leather strap closure

LISBON is available in the colours below.

- | | | | |
|-------------------------------------|---------------------------------|--|-------------------------------------|
| | | | |
| CLOUD black/
NUPO metallic | CLOUD black/
CLOUD brown | BULL warm grey/
BULL black | BULL cognac/
BULL black |
| | | | |
| CLOUD brown/
NUPO sand | NUPO army green/
NUPO nature | CLOUD anthracite/
NUPO pastel green | NUPO light blue/
NUPO light grey |
| | | | |
| NUPO anthracite/
NUPO light grey | NUPO rose/
NUPO light grey | CLOUD black/
CLOUD red | BUFFALO black/
BUFFALO nature |
| | | | |
| NUPO dark blue/
NUPO black | BULL black/
BULL brown | NUPO dark green/
NUPO olive green | NUPO midnight
blue/NUPO petrol |
| | | | |
| NUPO caviar/
NUPO clay brown | HIPPO DOUBLE
anthracite-grey | HIPPO DOUBLE
black-anthracite | |



LONDON COLLECTION

LONDON is a contemporary collection of traditional clipboards with a twist - making it clear to your customers that they have come to a place that values improvement and rethinking of the status quo.

The collection consists of a simplistic clipboard version and a folder version.

The clipboard is available in size A4, A5 and A6. To ensure great stability, the backside is made of two layers of leather. It comes in all of LIND DNA's single-sided recycled leather surfaces and colours.

The folder version is available in size A4, A5 and A6 and can be made with an optional holder for a pencil inside. It is available in all double-sided recycled leather colours (displayed below), which gives you the opportunity to display different colours on the inside and the outside of the folder (displayed at page 51).



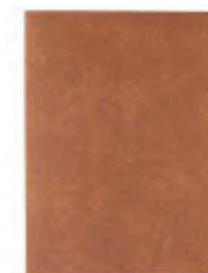
LONDON clip board
A4 W:22,5xH:31 cm



LONDON clip board
A5 W:16,5xH:22,5 cm



LONDON clip board
A6 W:13xH:18 cm



LONDON folder with clip
Front size A4/A5/A6
A4 W:23xH:21,5 cm
A5 W:16,5xH:22,5 cm
A6 W:12xH:18 cm



CONTINUED →

LONDON COLLECTION



LONDON Clipboard - different sizes.
With pencil and strap closing add-on feature.



LONDON Clipboard is available in all colours.
LONDON folder is available in the colours below.

- | | | | |
|-------------------------------------|---------------------------------|--|-------------------------------------|
| | | | |
| CLOUD black/
NUPO metallic | CLOUD black/
CLOUD brown | BULL warm grey/
BULL black | BULL cognac/
BULL black |
| | | | |
| CLOUD brown/
NUPO sand | NUPO army green/
NUPO nature | CLOUD anthracite/
NUPO pastel green | NUPO light blue/
NUPO light grey |
| | | | |
| NUPO anthracite/
NUPO light grey | NUPO rose/
NUPO light grey | CLOUD black/
CLOUD red | BUFFALO black/
BUFFALO nature |
| | | | |
| NUPO dark blue/
NUPO black | BULL black/
BULL brown | NUPO dark green/
NUPO olive green | NUPO midnight
blue/NUPO petrol |
| | | | |
| NUPO caviar/
NUPO clay brown | HIPPO DOUBLE
anthracite-grey | HIPPO DOUBLE
black-anthracite | |



LONDON Folder

VARIATIONS

As all of our menu folders,
LONDON can be made with
several different closing
options.

Sizes: A6, A5, A4
Metal clip: black



COPENHAGEN COLLECTION

COPENHAGEN is a contemporary collection of menu boards, inspired by traditional clipboards - designed with a stylish new twist. Instead of the clip, we have added an overlay of leather and studs in the top, which makes it easy to open and close the board within a heartbeat and allows for a swift and easy exchange of the papers inside.

COPENHAGEN I and II are available in size A4 and A5. To ensure great stability, the backside of the board is made of two layers of leather.

They come in all single-sided recycled leather surfaces and colours.



COPENHAGEN I
size A4/A5
A4 W:22,5xH:31,3 cm



COPENHAGEN II
size A4/A5
A5 W:16,5xH:22,5 cm



TRADITIONAL MENU

STARTERS

- Oyster "perle blanche"
With vinaigrette, lemon and crunchy, per oyster
- Steamed mussels
"Moules Marinières"
- Snails like in Burgundy
With garlic, parsley, croutons and pastis
- Marrow pipes from Danish Veal
With parsley salad and grilled toast, 3 pieces
- Classic fitch soup
With croutons, grated Gruyère and aioli
- Foie Gras Terrine
with chutney and warm brioche
- Salade "Gourmandise"
With selected French specialties

Served from 5:30 pm to 10:00 pm

MAIN COURSE

- Steamed mussels
"Moules Marinières"
- Michel Michauds steak tatar with salad
A tribute to one of the greatest icons in Danish Gastronomy
- Confit de Canard
With potato puré, fennel and herbs
- Toasted Cod "Basquaise"
With clam sauce and salad
- Entrecôte
Bearnaise with French fries and salad
- Ekstra French fries or pommes puré

DESSERT

- Selection of cheese from the large Cheese table
With sweet, crisp and sour, per cheese
- Magdalene's temptations
for the coffee
- Classic-Creme Brulée
With Polynesian vanilla

NEW YORK COLLECTION

NEW YORK is a simple, yet sophisticated collection of menu folders, that perfectly mirror the high standard of food and beverage you serve.

The folders come in a portrait and landscape version, with steel rivets on the frontside and the backside. The rivets have an opening and closing function in the back, allowing you to exchange your paper menus easily. At the same time, they add a decorative touch.

NEW YORK is available in size A4 and A5. The collection comes in all double-sided recycled leather colours, which gives you the opportunity to display different colours on the inside and the outside of the folder.



NEW YORK Folder A4/A5
A5 W: 22,4xH:16,2
A4 W: 30,9xH:22,4 cm



A4 W: 22,2xH:31,1 cm

NEW YORK is available in the colours below.

- | | | | |
|-------------------------------------|---------------------------------|--|-------------------------------------|
| | | | |
| CLOUD black/
NUPO metallic | CLOUD black/
CLOUD brown | BULL warm grey/
BULL black | BULL cognac/
BULL black |
| | | | |
| CLOUD brown/
NUPO sand | NUPO army green/
NUPO nature | CLOUD anthracite/
NUPO pastel green | NUPO light blue/
NUPO light grey |
| | | | |
| NUPO anthracite/
NUPO light grey | NUPO rose/
NUPO light grey | CLOUD black/
CLOUD red | BUFFALO black/
BUFFALO nature |
| | | | |
| NUPO dark blue/
NUPO black | BULL black/
BULL brown | NUPO dark green/
NUPO olive green | NUPO midnight
blue/NUPO petrol |
| | | | |
| NUPO caviar/
NUPO clay brown | HIPPO DOUBLE
anthracite-grey | HIPPO DOUBLE
black-anthracite | |



BARCELONA Folder A4



74 BARCELONA Folder A4



BARCELONA Folder A4 backside

BARCELONA COLLECTION

BARCELONA is a clean and elegant collection of menu folders that perfectly add on to a unique and distinctive restaurant experience, in the highest quality.

The hand-tied leather cord on the backside of the folder holds several menu pages securely in place, while at the same time adding a beautiful detail to the simplistic design.

BARCELONA is available in size A4 and A5. The collection comes in all double-sided leather colours, to give you the opportunity to play with different colours on the inside and the outside of your folder.



BARCELONA Folder A4 / A5
Front
A4 W: 24,4 x H: 32,8 cm
A5 W: 16,7 x H: 23 cm



BARCELONA FOLDER A4 / A5
Back A4/A5



Open size A4/A5

BARCELONA is available in the colours below.

- | | | | |
|-------------------------------------|---------------------------------|--|-------------------------------------|
| | | | |
| CLOUD black/
NUPO metallic | CLOUD black/
CLOUD brown | BULL warm grey/
BULL black | BULL cognac/
BULL black |
| | | | |
| CLOUD brown/
NUPO sand | NUPO army green/
NUPO nature | CLOUD anthracite/
NUPO pastel green | NUPO light blue/
NUPO light grey |
| | | | |
| NUPO anthracite/
NUPO light grey | NUPO rose/
NUPO light grey | CLOUD black/
CLOUD red | BUFFALO black/
BUFFALO nature |
| | | | |
| NUPO dark blue/
NUPO black | BULL black/
BULL brown | NUPO dark green/
NUPO olive green | NUPO midnight
blue/NUPO petrol |
| | | | |
| NUPO caviar/
NUPO clay brown | HIPPO DOUBLE
anthracite-grey | HIPPO DOUBLE
black-anthracite | |



OSLO Folder A4
and OSLO Tall

OSLO COLLECTION

OSLO is an elegant collection of menu/wine folders and a payment card, designed to add on to a truly exclusive restaurant experience to your customers.

The simplistic folders, made from recycled leather, come with an elastic string inside, that will neatly hold several menu pages in place. At the same time, it allows for a swift and easy exchange of pages.

OSLO is available in size A4, A5, a tall folder, a payment card and a double edition. The collection comes in all LIND DNA double sided leather colours, which gives you the opportunity to play with different colours on the inside and the outside of your folders.

The OSLO DOUBLE is a perfect solution with Menu and Wine card in one. This makes it easy and elegant for both you and your guests to flip the menu.



2-in-1 OSLO
DOUBLE MENU
A4 W:22,5xH:32,5 cm

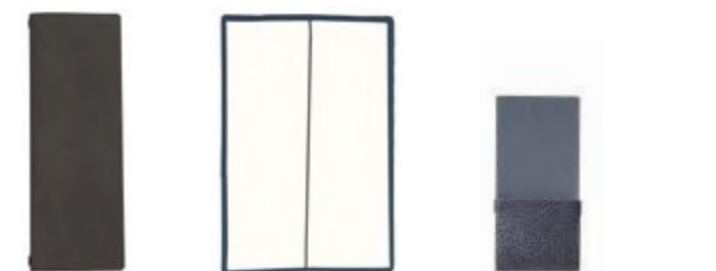
OSLO Folder A4 / A5
A4 W:22xH:33,2 cm
A5 W:15,5xH:23,6 cm



OSLO Tall



OSLO Folder A5



OSLO Folder Tall
W:11,8xH:33,2 cm

Open Tall

OSLO Payment Holder
W:9H:19 cm

CONTINUED →



OSLO
DOUBLE
folder A4
with Strap
Closure



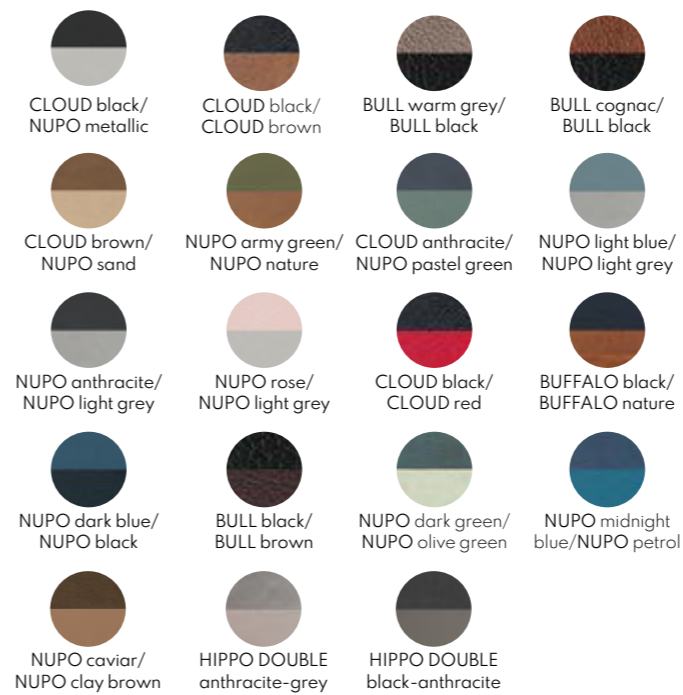
OSLO Tall

VARIATIONS

As all of our menu folders, OSLO can be made with several different closing options.

Sizes: A4, A5, tall folder, payment card, double edition.

OSLO is available in the colours below.



OSLO Payment Holder



String and bottom add-on

VIENNA COLLECTION

VIENNA is a clever and detailed collection of menu and payment folders.

The VIENNA menu folder - designed for two sided menus - is embellished with a hand-stitched frame along the edges and sewn-on pieces of leather in the top and the bottom to hold your menu in place. At the same time, the sewn-on pieces makes it very easy to exchange the pages inside the folder. The menu folder is available in size A4.

The VIENNA payment folder is designed to match the menu folder in the best way possible. It is embellished with a hand-stitched frame along the edges and has a sewn-on piece of leather in the bottom of the inner backside, with room for the bill and a credit card.



VIENNA Menu A4
Front A4
W:24,4xH:32,4 cm



VIENNA A4
Open A4

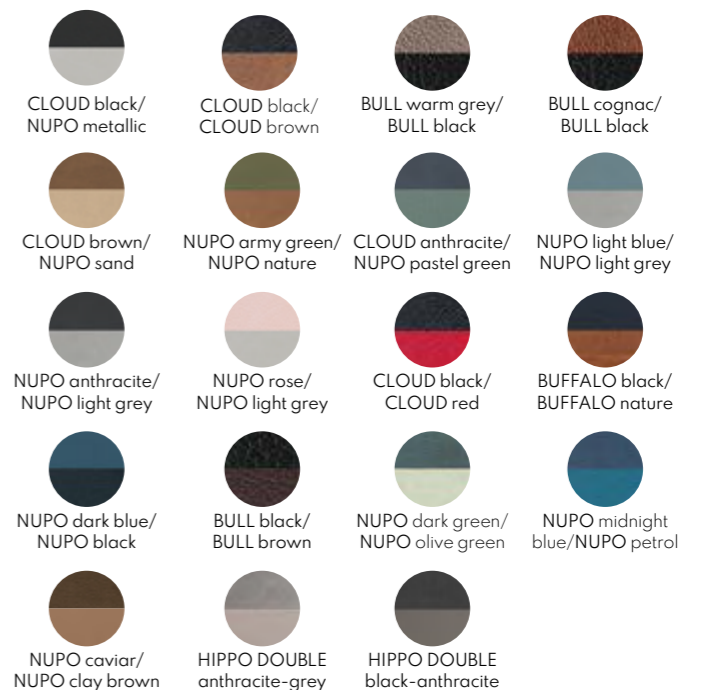


VIENNA Payment
holder
Front
W:9,3xH:21 cm



Open

VIENNA is available in the colours below.





AMSTERDAM COLLECTION

AMSTERDAM is a simplistic, yet tastefully embellished collection of menu and payment folders, that will surely set you apart from other establishments.

The menu card is elegantly embellished with a hand-stitched frame along the edges and sewn-on corners, that neatly hold your one-paged menu in place both on the front and back side.

The menu folder also provides room for two pages. Just like the board version, it is elegantly embellished with a hand-stitched frame along the edges and sewn-on corners inside that neatly hold your menu in place.

Last but not least, the collection offers a payment folder. The upper part of the payment folder can be flipped up to insert the bill and a card and then be flipped down again effortlessly to the lower part, with hand-sewn details.

The complete collection comes in all DOUBLE leather colours, which gives you the opportunity to play with different colours on the inside and the outside of all designs.



AMSTERDAM Folder
A4 / A5
Front
A4 W:22.5xH:31.5 cm
A5 W:16.8xH:22.8 cm



Open A4
A4 Folder available with 4 pages



AMSTERDAM
Payment
holder
Front
W:9xH:18 cm

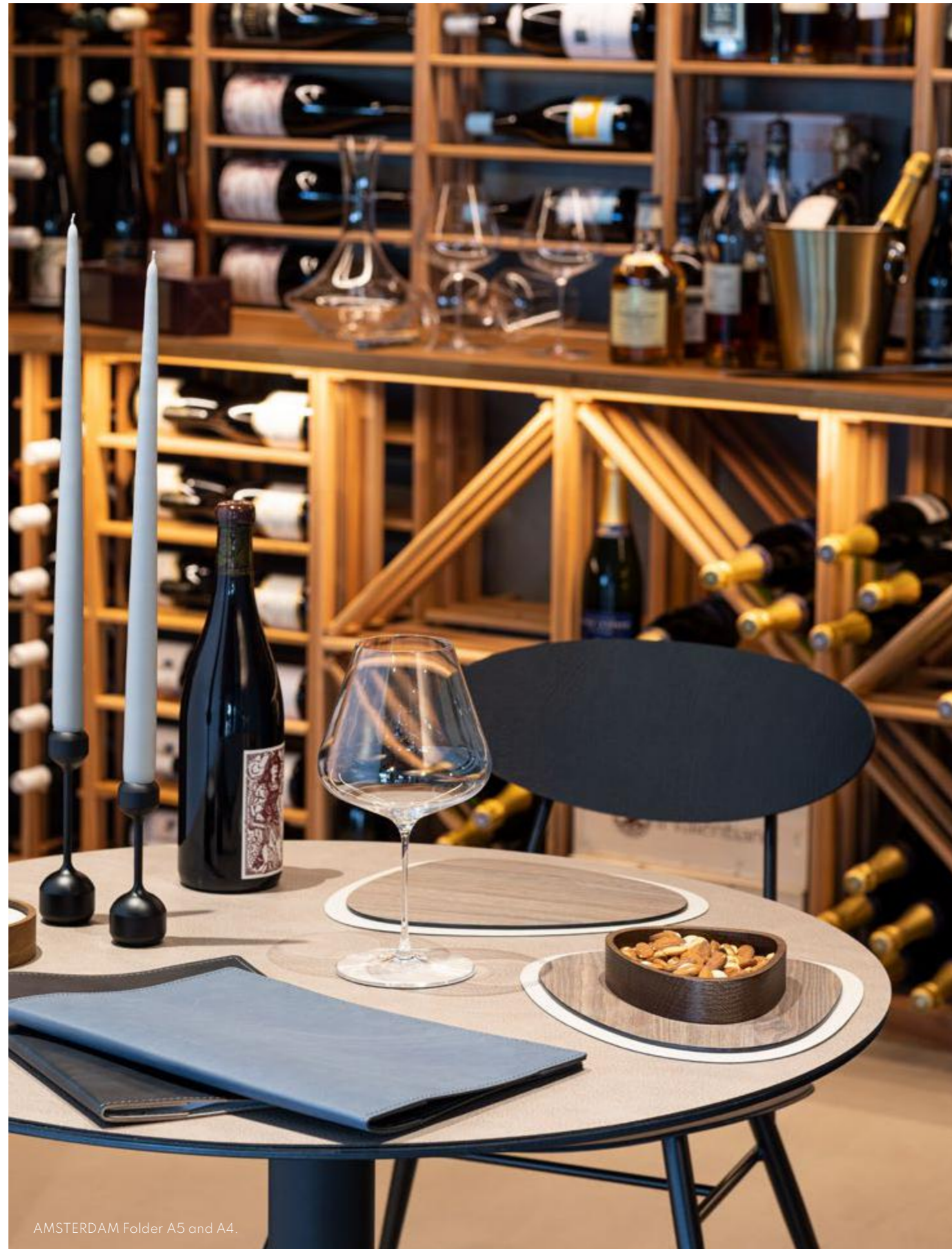


Open



AMSTERDAM Card A4 / A5
Front A4/A5
A4 W:22.9x31.5 cm
A5 W:16.8xH:22.8 cm

CONTINUED →



AMSTERDAM Folder A5 and A4.



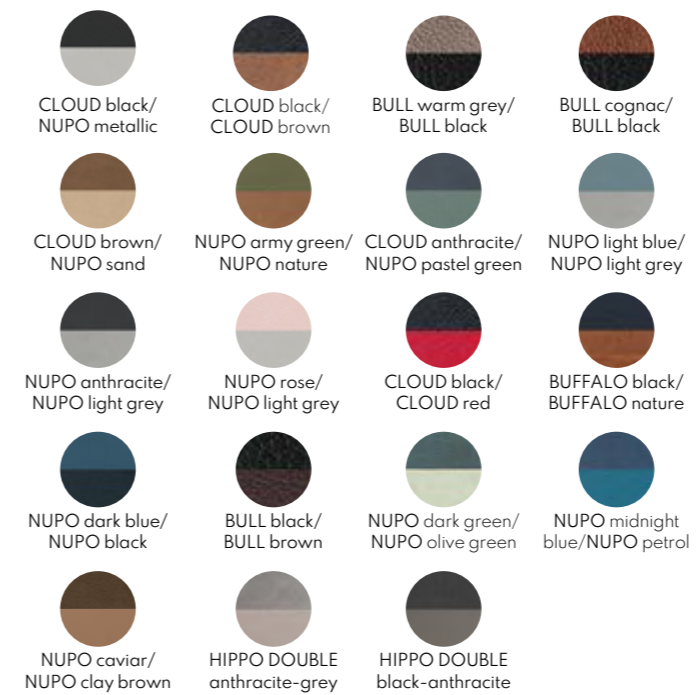
AMSTERDAM Folder A4

VARIATIONS

As all of our menu folders, AMSTERDAM can be made with several different closing options.

Sizes: A4, A3

AMSTERDAM is available in the colours below.



AMSTERDAM Card A4



AARHUS COLLECTION

AARHUS is an informal, yet upscale collection of menu holders that will make a great first impression on your customers.

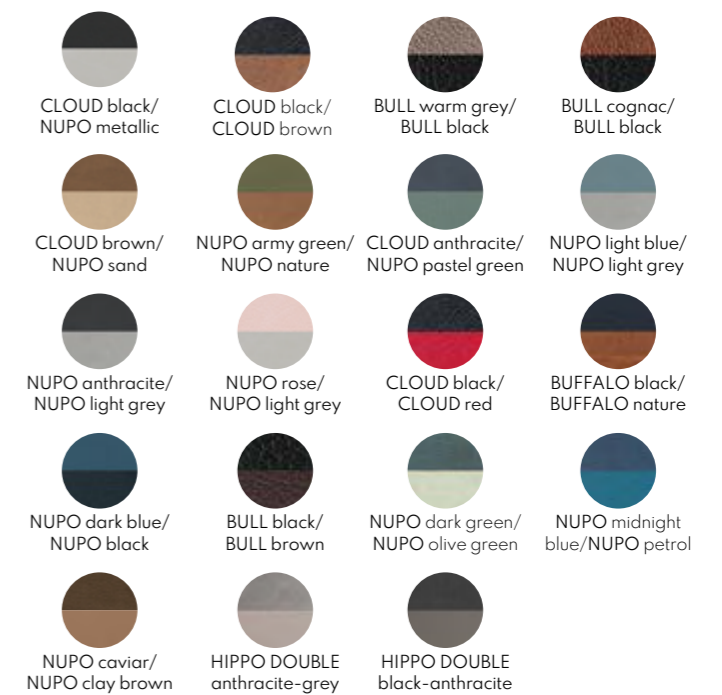
It is an effortless flip-over concept that can be used in a landscape and a portrait version. It comes with a leather cord in the top, holding frontside and backside together. The leather cord - adjusted with an oak bead - will hold even numerous pages securely in place. To ensure great stability, the backside of the board is made of two layers of leather.

AARHUS is available in size A4. The collection comes in all double-sided recycled leather colours, which gives you the opportunity to surprise your customers with an extra colour when opening the menu.



AARHUS A4
W:22,5xH:31 cm

AARHUS is available in the colours below.





ROME COLLECTION

ROME is an innovative and stylish collection of menu holders that will delight your customers, while choosing their servings.

It is a flip-over concept, with decorative steel rivets in the top, holding frontside and backside together. The rivets have an opening and closing function in the back. To ensure great stability, the backside of the board is made of two layers of leather.

ROME is available in size A4 and A5. The collection comes in all double-sided recycled leather colours (displayed below), which gives you the opportunity to surprise your customers with an extra colour when opening the menu.

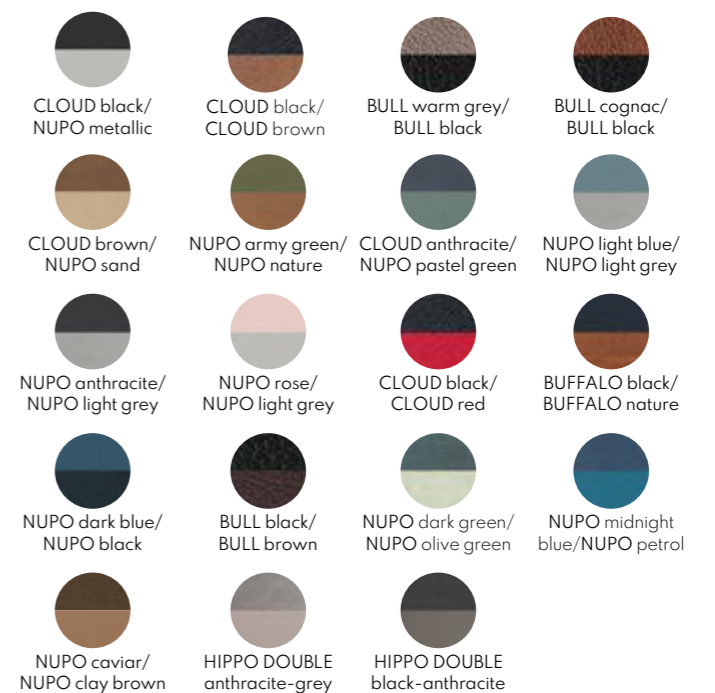


ROME A4 w. rivets
W: 22,5 x H: 31 cm



ROME A5 w. rivets
W: 16,5 x H: 22,5 cm

ROME is available in the colours below.





BRUSSELS COLLECTION

BRUSSELS is an accomplished and robust collection of restaurant and hotel binders in an upgraded quality.

The collection comes in two different versions - BRUSSELS I and BRUSSELS II - both with a strong wool lining inside and embellished with a hand-stitched frame along the edges. They come with a black ring binder mechanism inside, that makes it easy for your customers to quickly browse through numerous pages in a short time. BRUSSELS I is bound in recycled leather all the way around. BRUSSELS II comes with leather in the front and the back - allowing the wool to beautifully show at the spine.

The collection comes in all single-sided recycled leather surfaces and colours.



BRUSSELS I
Front A4



BRUSSELS I
Open A4/A5
A4 W: 23,5 x H: 32,8 cm
A5 W: 16,5 x H: 23,5 cm



BRUSSELS II
Front A4/A5
A4 W: 24 x H: 32,8 cm
A5 W: 17 x H: 23,5 cm



Open A5

BRUSSELS I



BRUSSELS II



PAYMENT HOLDERS



VIENNA

The VIENNA payment folder is embellished with a handstitched frame along the edges and a sewn-on piece of leather in the bottom of the inner back-side, with room for the bill and a credit card.

Available in all double leather colours.



Front size
W: 13 x H: 21,5 cm

Open



OSLO

To match your menu or by itself, the OSLO payment holder is designed to hold a bill and a credit card for a discreet and elegant payment transaction. Just as the rest of the collection,

OSLO is available in all double leather colours, which allows you to play with different colours to match your style.



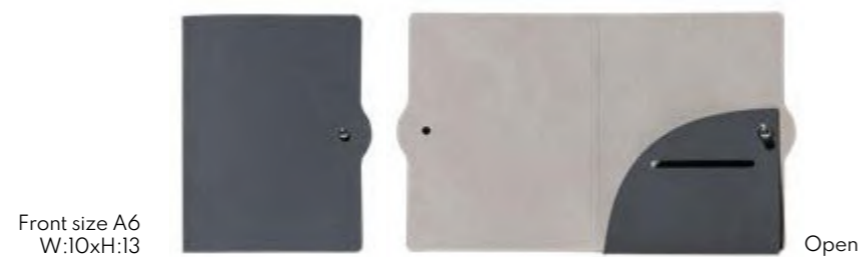
Front size
W: 9 x H: 18 cm



PARIS

PARIS Payment Holder offers a discrete solution to the presentation of the bill. The folder is held closed by a stud closing mechanism. Inside the folder, you will find a small pocket for the bill and a slot for the insertion of credit card.

It is available in all our double leather combinations.



Front size A6
W:10xH:13

Open



BERLIN

The payment folder is lined with strong wool on the inside and it comes with all single-sided recycled leather colours in the front and the back - allowing the wool to beautifully show at the spine. It is embellished with a hand-stitched frame along the edges and it offers two open pockets for the bill and a credit card inside.

The payment card comes with leather on the frontside and wool on the backside. It is beautifully embellished with a hand-stitched frame along the edges and comes with two open pockets for the bill and a credit card on the backside.

Available in all single colour leather.



Front size
W:11,5xH:21 cm

Open

Front size
10,8x23 cm

Back



STOCKHOLM

STOCKHOLM offers room for both the bill and a credit card. The flip adds discretion and the metal corners holds everything into place.

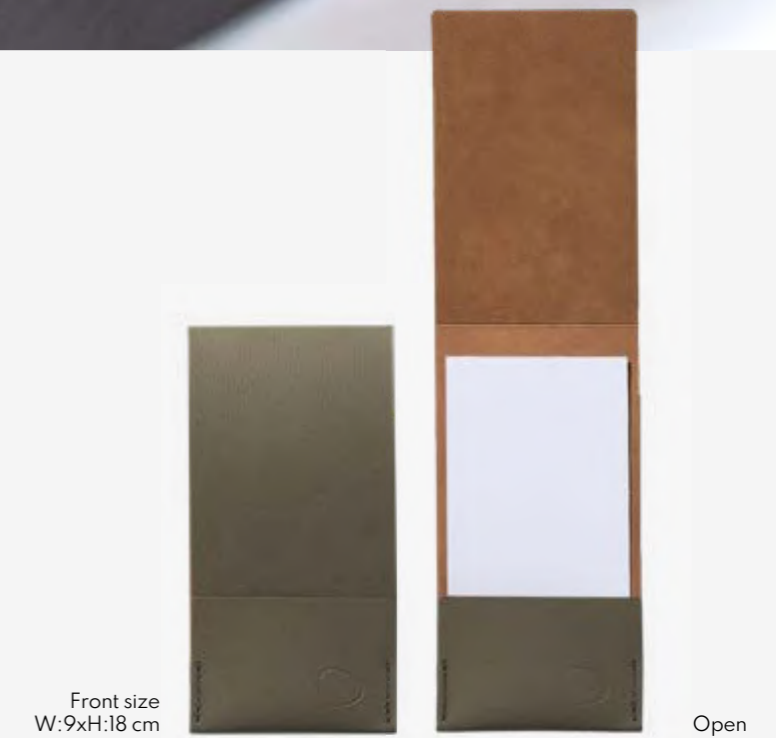
Available in all double leather colours.



AMSTERDAM

The upper part of the AMSTERDAM payment holder can be flipped up to insert a bill and a card and flipped down and stay in place under the hand-sewn details on the front.

It is available in all double leather colours.





WOOD BOX SQUARE



WOOD BOX

Our lovely wooden boxes are not only suitable for snacks or storage, they can also serve as neat and unique payment holders. Sourced from European oak and treated with vegetable oil, these wooden boxes come in oak nature, smoked and black stained version to provide an exclusive look to your table setting. The lid comes in all our colours to either match your style or be a statement piece of its own.



WOOD BOX CURVE



WOOD BOX CIRCLE



CUSTOMIZATION OPTIONS

ADD-ONS

Choose among different add ons to the design of your menu and wine holders.



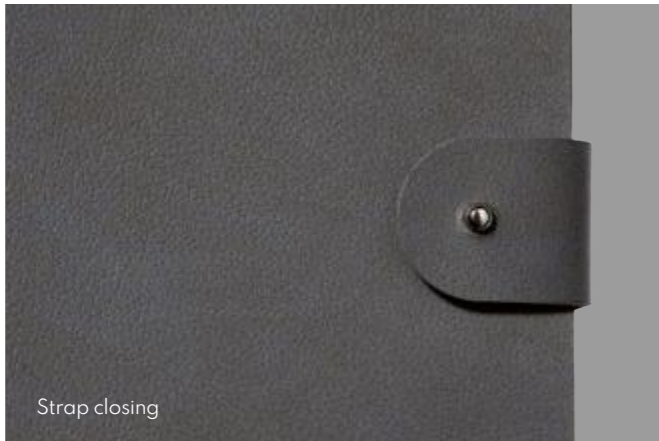
Inner sleeve



Pencil holder



String & button closing



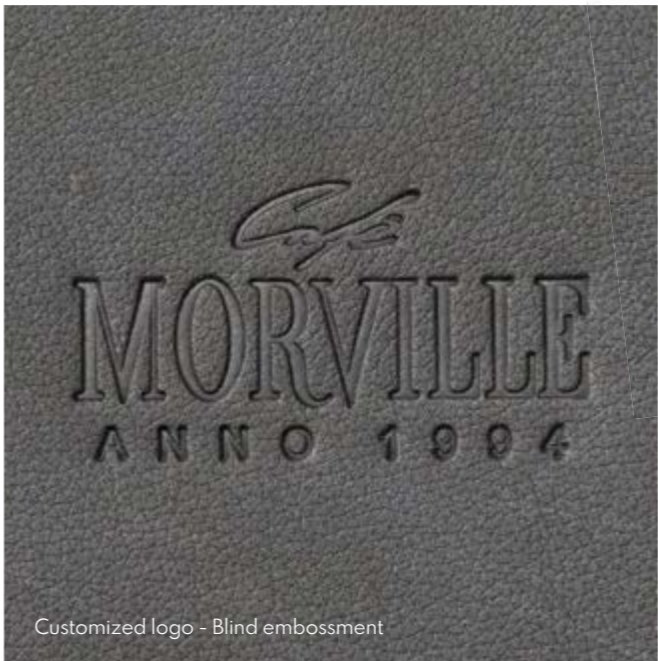
Strap closing



Pencil & clip solution

LOGO EFFECTS

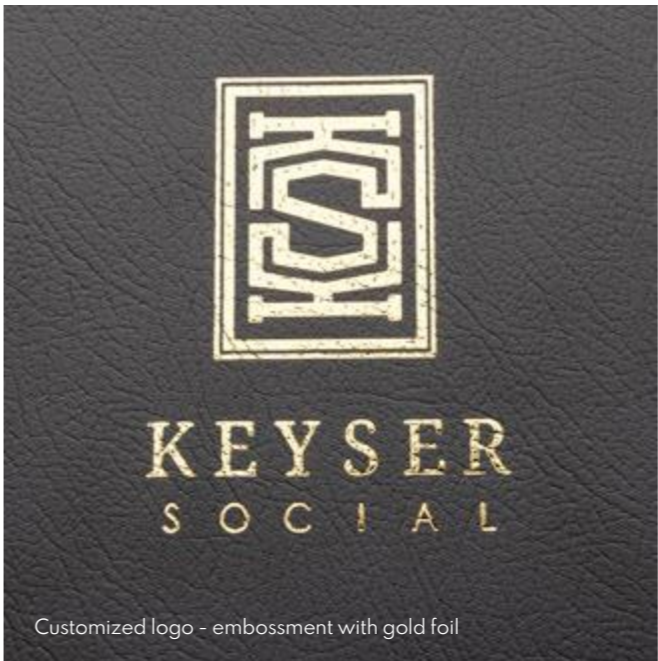
We offer embossment of customer logo, and standard graphics such as: Menu, Wine and [Embossment can be made as blind embossme as well as with foil in different colours.



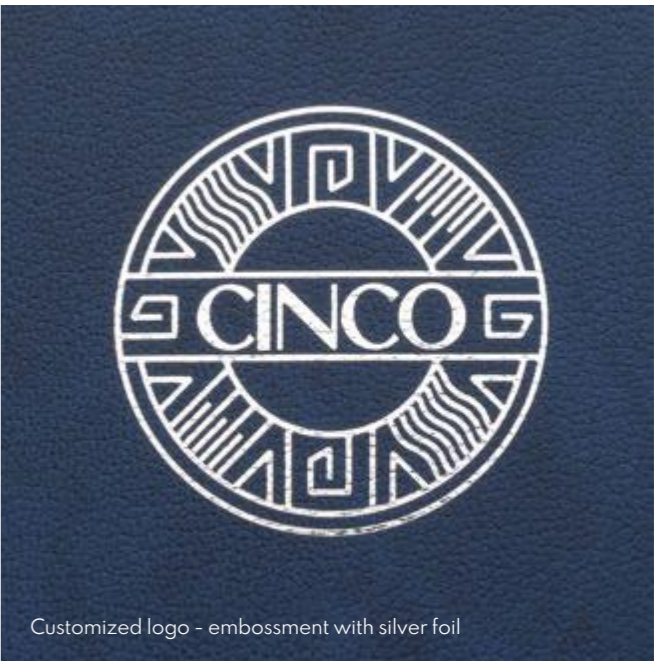
Customized logo - Blind embossment



Blind embossment



Customized logo - embossment with gold foil



Customized logo - embossment with silver foil

TRAYS





TEA&COFFEE TRAY

This is a functional and decorative aluminum tray, with an exchangeable recycled leather inlay, which comes with cut-outs for the different components to be placed on the tray. You can place tea, coffee capsules, sugar or snacks. The tray is available in anthracite, bronze and metallic. The small bowl is available in anthracite, and can be customized in other colours. The wood box has an optional lid made from recycled leather.

To make sure that the different components stay in place, the inlay is made in our 3mm recycled leather quality - see colours on the opposite side. Possibilities of designs are endless, and can be customized at a minimum of only 50 inlays. The holes for coffee capsules match the capsules from Nespresso, but can be customized to fit any type of coffee capsules.



TEA&COFFEE TRAY is available in the colours below.



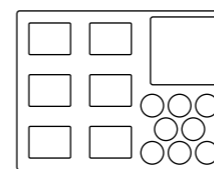
TRAY SQUARE M
W:28xL:36xH:2.8 cm



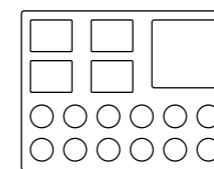
At a minimum of 50 pcs, we are able to offer solutions with inlay in all standard colours.



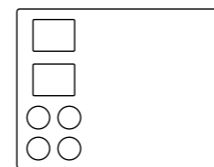
STANDARD INLAYS



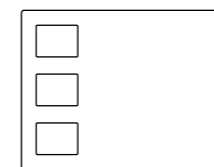
TEA&COFFEE TRAY M
1 inlay w. cut outs
6 small bowls
& wood box
W: 28 x L: 36 x H: 2,8 cm



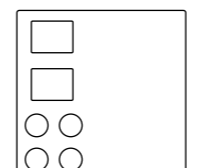
TEA&COFFEE TRAY M
1 inlay w. cut outs
4 small bowls
& wood box
W: 28 x L: 36 x H: 2,8 cm



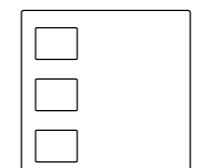
TEA&COFFEE TRAY M
1 inlay w. cut outs
2 small bowls
W: 28 x L: 36 x H: 2,8 cm



TEA&COFFEE TRAY M
1 inlay w. cut outs
3 small bowls
W: 28 x L: 36 x H: 2,8 cm



TEA&COFFEE TRAY S
1 inlay w. cut outs
2 small bowls
W: 29 L: 29 x H: 2,8 cm



TEA&COFFEE TRAY S
1 inlay w. cut outs
3 small bowls
W: 29 x L: 29 x H: 2,8 cm



TRAYS WITH LEATHER INLAY

Inlays for our metal trays are available in a single sided version in all our standard textures/colours, and in a double sided version, which can be flipped around for a totally new expression. The double sided version is available in all our standard double colour combinations.



TRAY SQUARE MINI

This decorative aluminum tray is designed for smaller servings, as a permanent tray or for storing small accessories. The tray is decorated with an exchangeable recycled leather inlay. The aluminum tray is available in the colours anthracite, bronze and metallic. The leather inlay can be colour customized on request in all our available leather surfaces and leather colours.

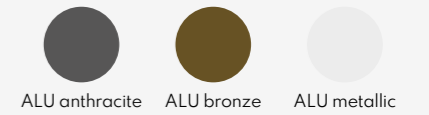
TRAY SQUARE MINI
W:22xL:22xH:4,8 cm



TRAY SQUARE S

This tray is perfect for a small serving such as drinks, coffee or snacks. It can also be placed in a hotel room or at the reception and used for storage or to display selected items. The tray is made of aluminum and on the inside, it is covered with exchangeable recycled leather, which can be colour customized after request in all our available leather surfaces and leather colours.

TRAY SQUARE S
W:29xL:29xH:2,8 cm



The aluminum is available in the colours anthracite, bronze or metallic. The leather inlay is available in a variety of beautiful customized colours.





TRAY SQUARE M

This beautiful aluminum tray is perfect for medium sized servings. Use it to serve breakfast to your guests or as a beautiful way to showcase accessories such as flowers or candleholders. The tray is decorated with a leather inlay that can be replaced as needed or wanted. The leather inlay is available in a variety of colours and surface structures and it is therefore possible to match the style you want. The tray itself is available in the colours anthracite, bronze and metallic.

TRAY SQUARE M
W:28xL:36xH:2,8 cm



TRAY SQUARE L

The TRAY SQUARE L is designed with a combination of aluminum and leather, which gives it a minimalist and modern look. The tray comes with a decorative leather inlay that can easily be picked up and cleaned. The smart leather inlay gives it a unique look, as you can choose from our entire range of colours to suit your style. The aluminum tray is available in the colours anthracite, bronze and metallic. Use the tray for decoration, storage or to serve meals for your guests in the hotel rooms.



TRAY SQUARE L
W:37xL:47xH:3,5 cm





TRAY SQUARE XL
W:40xL:59xH:3,5 cm



ALU anthracite ALU bronze ALU metallic

TRAY SQUARE XL

The TRAY SQUARE XL is designed to match a minimalist and modern look which makes it easy to fit in wherever you place it. The tray comes with a leather inlay that can easily be picked up, flipped or replaced with another colour or surface structure. Inlays are available in all our standard colours and textures. The tray is available in the colours anthracite, bronze and metallic. Use this extra large tray to serve lovely and tasty meals to your guests or use it to display beautiful accessories.

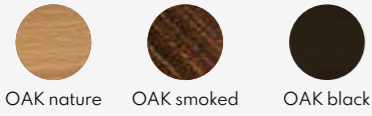


WOOD BOX



WOOD BOX

Our beautiful WOOD BOXES are designed from European oak and treated with vegetable oil, which make them suitable for serving snacks. They come in three shapes CURVE, SQUARE and CIRCLE- making size S suitable for storing our GLASS MATS in recycled leather. The WOOD BOX small comes with or without a lid in any recycled leather colour.



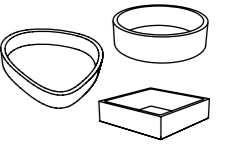
OAK nature OAK smoked OAK black



WOOD BOX CURVE S WOOD BOX SQUARE S WOOD BOX CIRCLE S WOOD BOX CURVE M WOOD BOX CURVE L

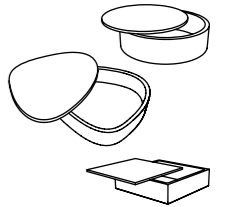
FINISH/COLOUR	COLOUR	WOOD BOX CURVE S	WOOD BOX SQUARE S	WOOD BOX CIRCLE S	WOOD BOX CURVE M	WOOD BOX CURVE L
		W:12,5x L:14xH:3 cm	W:11x L:11xH:3 cm	D:11x H:3 cm	W:16x L:18xH:3 cm	W:23x L:26xH:3 cm
OAK nature		989893	98165	98155	989980	98779
OAK smoked		989924	98166	98156	990071	981018
OAK black		991565	991631	991630	991566	—
COLLI		2	2	2	2	2

WOOD BOX CURVE, SQUARE & CIRCLE



WOOD BOX & LID CURVE, SQUARE & CIRCLE

FINISH/COLOUR	COLOUR	WOOD BOX&LID CURVE S	WOOD BOX&LID SQUARE S	WOOD BOX&LID CIRCLE S
		W:12,5xL:14xH:3 cm	W:11xL:11xH:3 cm	D:11xH:3 cm
OAK nature / BULL black		98163	98167	98157
OAK nature / BULL cognac		990301	990303	990302
OAK nature / BULL nature		98162	98170	98159
OAK nature / BULL warm grey		990304	990306	990305
OAK smoked / BULL black		98160	98169	98158
OAK smoked / BULL cognac		990307	990309	990308
OAK smoked / BULL nature		98164	98168	98161
OAK smoked / BULL warm grey		990310	990312	990311
COLLI		2	2	2

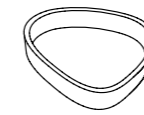




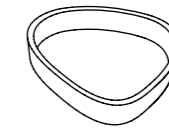
CIRCLE BOX WITH LID

CURVE BOX WITH LID

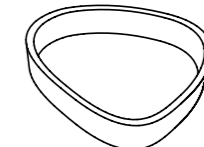
CURVE WOOD BOX comes in three different sizes. SQUARE and CIRCLE only come in size small.



CURVE SMALL
W:12,5xL:14xH:3 cm



CURVE MEDIUM
W:16xL:18xH:3 cm



CURVE LARGE
W:23xL:26xH:3 cm



SQUARE BOX

CURVE BOX

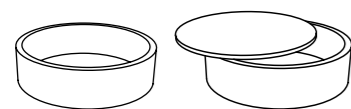
CIRCLE BOX



CURVE BOX MEDIUM & LARGE

CURVE BOX SMALL

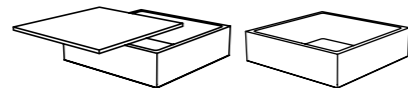
Our beautiful WOOD BOXES are also available with a lid. The lid can be customized with all our onesided leather types.



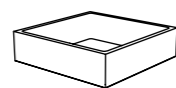
CIRCLE SMALL
D:11xH:3 cm



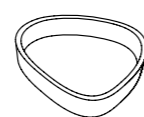
WITH LID
D:11xH:3 cm



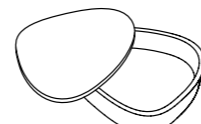
SQUARE SMALL
W:11xL:11xH:3 cm



WITH LID
W:11xL:11xH:3 cm



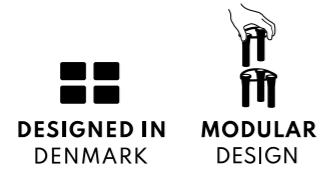
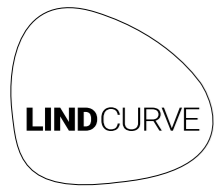
CURVE SMALL
W:12,5xL:14xH:3 cm



WITH LID
W:12,5xL:14xH:3 cm

CANDLEHOLDERS & VASE





MEET OUR MODULAR AND STACKABLE LIND CURVE COLLECTION

Designed by Preben Lind and handcrafted in Denmark, the patent pending design of the LIND CURVE collection combines creativity, craftsmanship and honest materials in a reimagined candleholder concept with timeless appeal.



24K



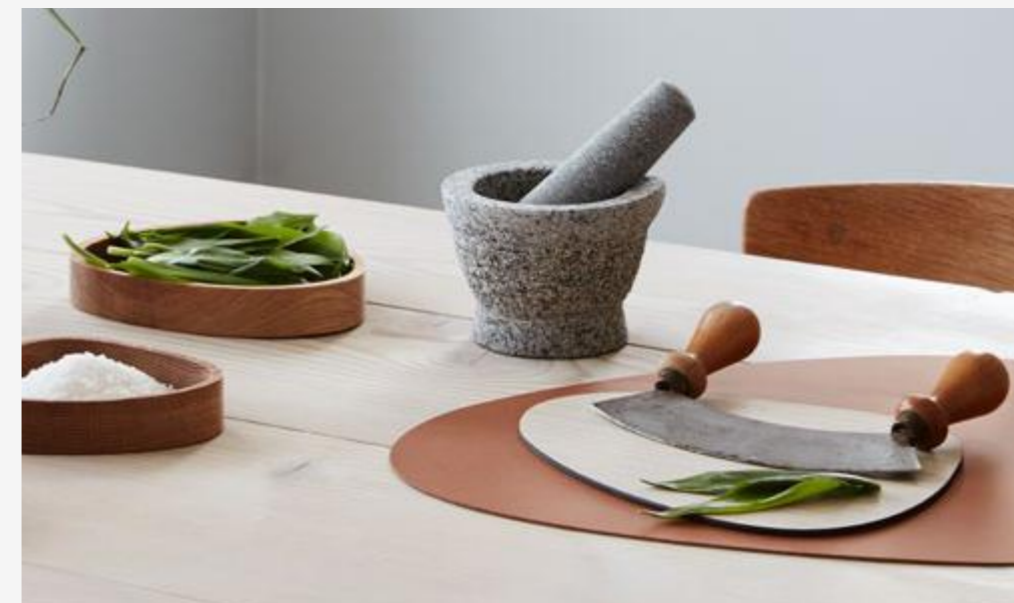




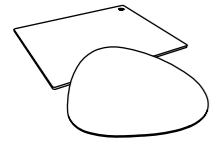
CUT&SERVE

Our CUT&SERVE collection of cutting boards may have a soft, wooden appearance, but is actually made from compact laminate - a very strong and durable material consisting of multiple kraft paper layers pressed together with resin from trees. Mixing high aesthetics and functionality, the boards can be used as decorative serving boards for tapas or snacks.

The CUT&SERVE boards are dishwasher proof, almost impervious to wear and tear and heat-resistant up to 180 Celsius, making them applicable as trivets for hot pots and pans.

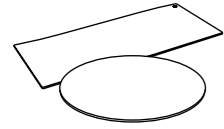


CUT&SERVE
ASH

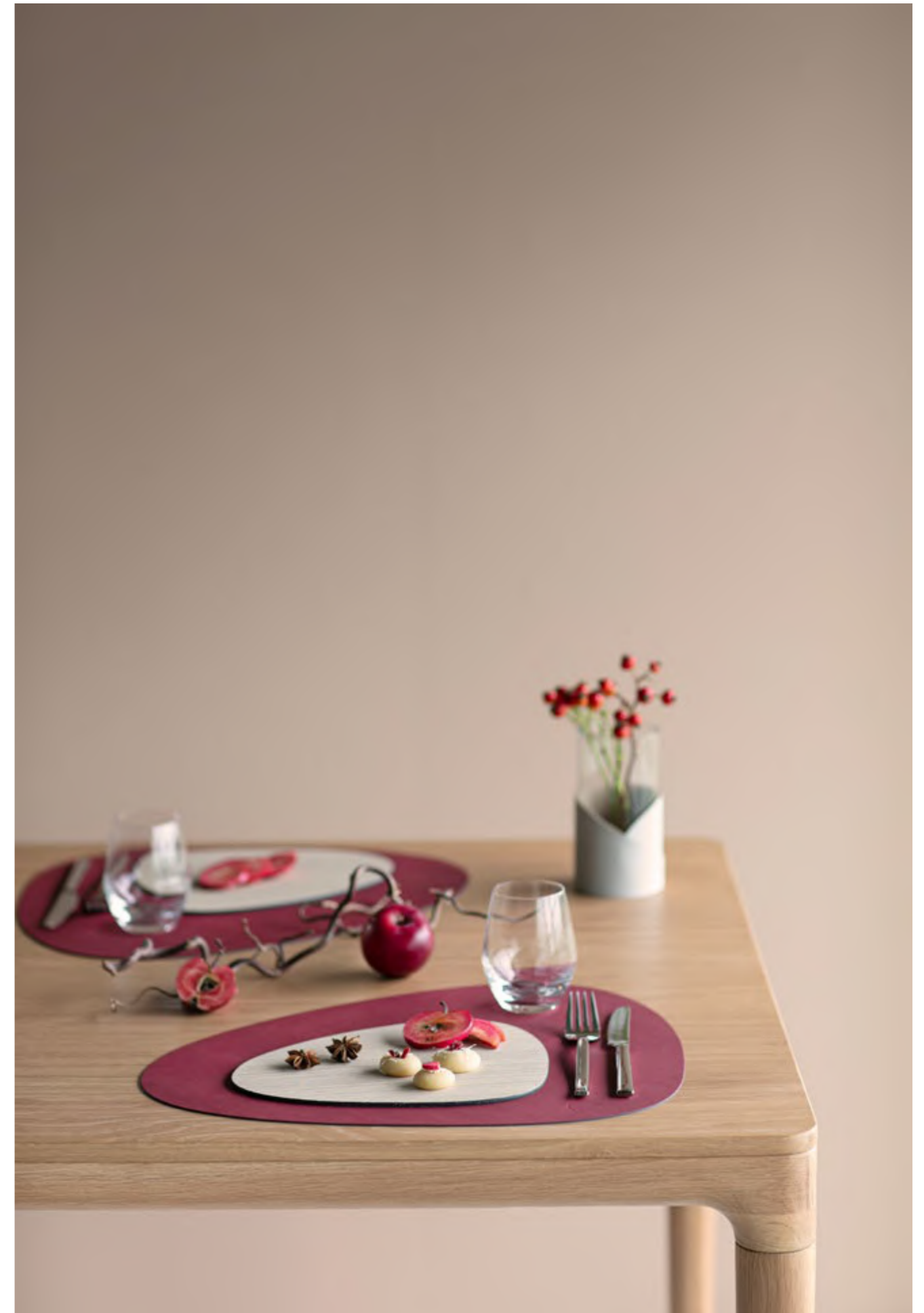


FINISH/COLOUR	QLTY.	COLOUR	CUT&SERVE CURVE S W:21xL:25 cm	CUT&SERVE CURVE L W:30xL:35 cm	CUT&SERVE SQUARE S W:16xL:25 cm	CUT&SERVE SQUARE L W:29xL:35 cm
COMPACT LAMINATE ash	4 mm		9868	9869	9875	9876
COLLI			4	2	4	2

CUT&SERVE
ASH



FINISH/COLOUR	QLTY.	COLOUR	CUT&SERVE CIRCLE S D:24 cm	CUT&SERVE CIRCLE M D:30 cm	CUT&SERVE BOARD W:20xL:48 cm
COMPACT LAMINATE ash	4 mm		98802	98803	98806
COLLI			4	2	2



ACCESSORIES



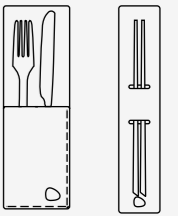


STICK HOLDER

Our STICK HOLDER in recycled leather arranges your chop sticks beautifully and adds that little extra something that makes all the difference. Available in all colours and surfaces to fit your need. It is an advantage to choose the double-sided to be able to turn it and switch the colour

FINISH/COLOUR	COLOUR	CUTLERY HOLDER		STICK HOLDER	
		W:8,5xL:26 cm		W:4,6xL:27 cm	
DOUBLE BUFFALO black / BUFFALO nature		990504		990514	
DOUBLE BULL black / BULL brown		990503		990513	
DOUBLE BULL cognac / BULL black		990506		990516	
DOUBLE BULL warm grey / BULL black		990505		990515	
HIPPO anthracite-grey		990498		991377	
HIPPO black-anthracite		990497		991378	
DOUBLE NUPO anthracite / NUPO light grey		990499		990509	
DOUBLE NUPO army green / NUPO nature		990501		990511	
DOUBLE NUPO dark green / NUPO olive green		991200		—	
DOUBLE NUPO midnight blue / NUPO petrol		991201		—	
DOUBLE NUPO pastel green / CLOUD anthracite		990500		990510	
DOUBLE NUPO sand / CLOUD brown		990502		990512	
COLLI		2		2	

CUTLERY & STICK HOLDER



Cutlery and Stick Holders can be customized in all double leather combinations.



CUTLERY HOLDER

Our hand-sewn and double-sided CUTLERY HOLDER in recycled leather brings that extra touch of exclusivity to the table. Available in all double-sided colours and surfaces to complete the look.



CURVE SALT&PEPPER

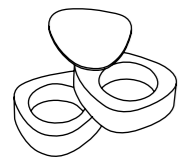
This is our SALT&PEPPER set, consisting of two small containers made from European oak, with a decorative and practical lid on top. All three pieces are coated with recycled leather. They can be taken apart and put back together as you wish - connected by invisible magnets. The recycled leather coating can be colour tailored, choose among our many different recycled leather colours and surfaces.

Curve SALT&PEPPER can be customized with leather in all textures and colours.



CURVE SALT&PEPPER

BULL, HIPPO & NUPO



CURVE SALT&PEPPER SET OF 2 PCS

FINISH/COLOUR	COLOUR	W:8xL:10xH:6 cm
OAK nature / BULL black		991329
OAK nature / BULL cognac		990322
OAK nature / BULL nature		991330
OAK nature / BULL warm grey		990323
OAK nature / HIPPO black-anthracite		981324
OAK nature / HIPPO anthracite-grey		98859
OAK nature / NUPO anthracite		981866
OAK nature / NUPO black		981870
OAK nature / NUPO brown		981869
OAK nature / NUPO caviar		991780
OAK nature / NUPO clay brown		991781
OAK nature / NUPO dark blue		981024
OAK nature / NUPO light blue		981025
OAK nature / NUPO light grey		981867
OAK nature / NUPO metallic		981871
OAK nature / NUPO midnight blue		991165
OAK nature / NUPO nature		982622
OAK nature / NUPO oyster white		991782
OAK nature / NUPO pastel green		981872
OAK nature / NUPO sand		981868
COLLI		2

WITH HIDDEN MAGNET IN THE WOOD AND LID

CURVE NAME TAG

When setting tables for large parties, name tags may be applied to personalize each seating. We offer our CURVE NAME TAG in our Curve design in all our standard colours and textures. The tags, beautifully personalized by handwriting with a felt pen, are to be placed around the stem of your wine glass and add an atmosphere of coziness and originality to your table.

Available in all standard leather textures and colours.



LOOP BRIDGE

NAPKIN HOLDER

Our napkin holders in recycled leather are a traditional item with a new look, embellishing the napkins beautifully on your table arrangement.

They are available in one-sided colours as well as double-sided colours to fit your table setting. The double-sided napkin holders are reversible with different appealing colours on either side and can be flipped to choose a different colour option every now and then.

Napkin holders can be customized in any colour.



LOOP

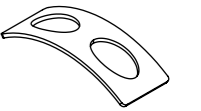
FINISH/COLOUR	QLTY.	COLOUR	LOOP	LOOP BRIDGE
			4 PCS	2 PCS
			W:1xL:30 cm	W:6xL:14 cm
BUFFALO black / BUFFALO nature	2,0 mm		98487	98239
BULL black / BULL brown	2,0 mm		98486	98238
BULL cognac / BULL black	2,0 mm		990313	990315
BULL warm grey / BULL black	2,0 mm		990316	990318
CLOUD anthracite / NUPO pastel green	2,0 mm		98479	98231
CLOUD black / NUPO metallic	2,0 mm		98481	98233
CLOUD black / CLOUD red	2,0 mm		990319	990321
CLOUD brown / NUPO sand	2,0 mm		98480	98232
HIPPO anthracite-grey	1,6 mm		98805	98849
HIPPO black-anthracite	1,6 mm		981376	981416
HIPPO gold	1,6 mm		990053	990055
HIPPO silver	1,6 mm		991538	991539
HIPPO navy blue	1,6 mm		981517	981509
HIPPO olive green	1,6 mm		983523	983525
HIPPO pastel green	1,6 mm		981515	981507
HIPPO sand	1,6 mm		981520	981512
HIPPO white-grey	1,6 mm		98944	98946
NUPO caviar	1,6 mm		991759	—
NUPO clay brown	1,6 mm		991760	—
NUPO oyster white	1,6 mm		991761	—
LACE black	1,6 mm		98493	98245
LACE brown	1,6 mm		98904	98905
NUPO anthracite / NUPO light grey	2,0 mm		98485	98237
NUPO army green / NUPO nature	2,0 mm		98484	98234
NUPO dark blue / NUPO black	2,0 mm		98482	98235
NUPO dark green / NUPO olive green	2,0 mm		991167	991170
NUPO light blue / NUPO light grey	2,0 mm		98483	98236
NUPO midnight blue / NUPO petrol	2,0 mm		991166	991171
NUPO rose / NUPO light grey	2,0 mm		98489	98240
NUPO caviar / NUPO clay brown	2,0 mm		991792	—
SERENE black	1,2 mm		991636	—
SERENE anthracite	1,2 mm		991635	—
SERENE mole grey	1,2 mm		991634	—
SERENE ash	1,2 mm		991633	—
SERENE cream	1,2 mm		991632	—
SERENE moss	1,2 mm		991639	—
SERENE nature	1,2 mm		991637	—
SERENE hazel	1,2 mm		991638	—
COLLI			4	2

LOOP

LOOP BRIDGE



LOOP



LOOP BRIDGE

NUMBER & TEALIGHT HOLDER

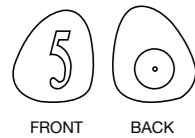
The body of our NUMBER is solid European oak nature covered with recycled leather on both sides. Turn it upside down and use it as a tealight holder to create just the right atmosphere at your table. Simply choose the recycled leather colour and surface that matches your style.*



*NUMBER & TEALIGHT holder is available on request

CURVE CANDLE HOLDER, TEALIGHT & NUMBER

NUMBER



CURVE TEALIGHT
HOLDER

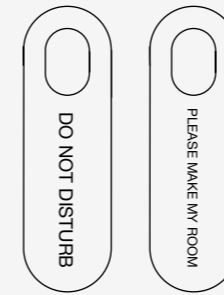
CURVE TEALIGHT HOLDER SET OF 2 PCS

W:8xL:10xH:5,6 cm

FINISH/COLOUR	COLOUR	
OAK nature / BULL black		991526
OAK nature / BULL nature		991527
OAK nature / BULL cognac		990479
OAK nature / BULL warm grey		990481
OAK nature / HIPPO anthracite-grey		98831
OAK nature / HIPPO black-anthracite		981339
OAK nature / NUPO anthracite		981764
OAK nature / NUPO army green		982598
OAK nature / NUPO black		981768
OAK nature / NUPO brown		981767
OAK nature / NUPO dark blue		989876
OAK nature / NUPO light blue		989877
OAK nature / NUPO light grey		981765
OAK nature / NUPO metallic		981769
OAK nature / NUPO nature		982599
OAK nature / NUPO pastel green		981770
COLLI		2

WITH HIDDEN MAGNET IN THE WOOD

DOOR HANGER W:8xL:26 cm



DOOR HANGER

With a DOOR HANGER in recycled leather you can ensure a consistent and exclusive look throughout your establishment. Comes in all shapes and sizes to give exactly the expression you want. Text on DOOR HANGER can be customized on request.



WORK MAT & MOUSE MAT

The WORK MAT and MOUSE MAT are ideal for the conference center, the office and preserving front desk at the hotel lobby - both types of mats are made from 3 mm recycled leather and tested to ensure ideal friction when using a computer mouse.

The mats are robust and durable in order to be used continuously. It is possible to choose with or without hand-stitched edges.



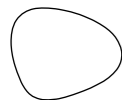
WORK MAT MOUSE MAT NO STITCHINGS



WORK MAT SQUARE



MOUSE MAT SQUARE



MOUSE MAT CURVE

FINISH/COLOUR	QLTY.	COLOUR	WORK MAT SQUARE XL W:44xL:64 cm	WORK MAT SQUARE XXL W:54xL:74 cm	MOUSE MAT CURVE W:28xL:34 cm	MOUSE MAT SQUARE W:25xL:30 cm
BULL black / NO STITCHING	3 mm		98425	98449	98288	98374
BULL cognac / NO STITCHING	3 mm		990454	990456	990519	990521
BULL nature / NO STITCHING	3 mm		98427	98451	98293	98379
BULL brown / NO STITCHING	3 mm		98428	98452	98291	98377
BULL warm grey / NO STITCHING	3 mm		990464	990466	990526	990528
CLOUD anthracite / NO STITCHING	3 mm		981584	981587	981590	981593
CLOUD light grey / NO STITCHING	3 mm		982977	982979	983416	983418
COLLI			2	2	2	2

FINISH/COLOUR	QLTY.	COLOUR	WORK MAT SQUARE XL W:44xL:64 cm	WORK MAT SQUARE XXL W:54xL:74 cm	MOUSE MAT CURVE W:28xL:34 cm	MOUSE MAT SQUARE W:25xL:30 cm
BULL black / STITCHING anthracite	3 mm		981105	981106	981103	981104
BULL cognac / STITCHING anthracite	3 mm		990451	990452	990517	990518
BULL warm grey / STITCHING anthracite	3 mm		990461	990462	990524	990525
BULL black / STITCHING white	3 mm		98418	98442	98290	98376
BULL cognac / STITCHING white	3 mm		990453	990455	990520	990522
BULL nature / STITCHING white	3 mm		98422	98446	98294	98380
BULL brown / STITCHING white	3 mm		98423	98447	98292	98378
BULL warm grey / STITCHING white	3 mm		990463	990465	990527	990529
CLOUD anthracite / STITCHING anthracite	3 mm		981585	981588	981591	981595
CLOUD light grey / STITCHING anthracite	3 mm		982976	982978	983417	983419
COLLI			2	2	2	2

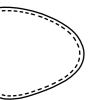
WORK MAT MOUSE MAT WITH STITCHINGS



WORK MAT SQUARE



MOUSE MAT SQUARE



MOUSE MAT CURVE